


UW HOSPITAL & FOCUSED INTERRUPTION PARTNERSHIP

A decorative graphic consisting of several parallel white lines of varying thicknesses, slanted diagonally from the bottom-left towards the top-right, positioned in the lower right quadrant of the slide.

OVERVIEW

- My Background
 - What is the role of FIC?
 - Discuss Trauma
 - FIC interactions:
 - UW Health & Madison PD
 - First Responders
 - Traumatic Events
 - Community
 - Opportunities to serve in your community
- 



- ▶ Background
- ▶ Witnessed Violent Incidents
- ▶ Impact
- ▶ Motivation

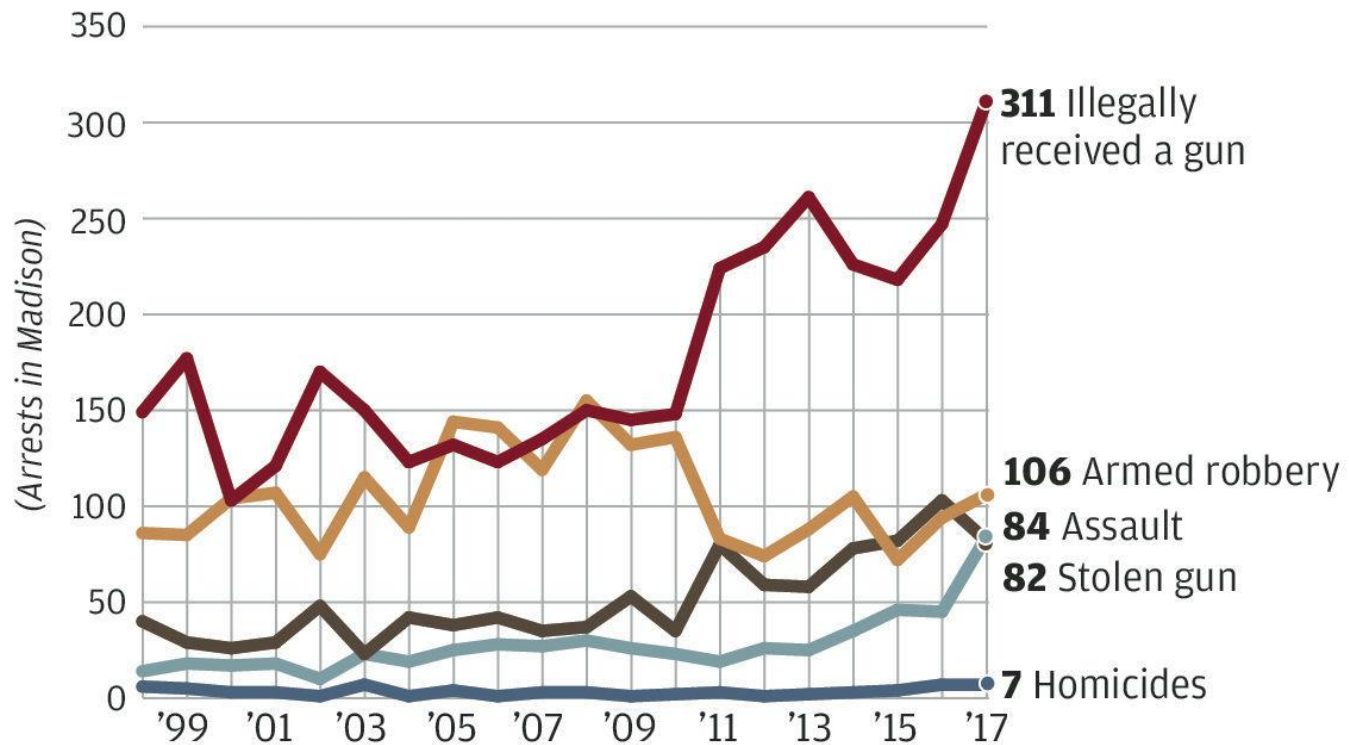
WHO IS
ANTHONY COOPER?

ROOT CAUSES OF VIOLENCE



Gun crime in Madison since 1998

Arrests in Madison for select crimes in which a gun was involved.



SOURCE: Madison Police Department

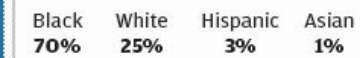
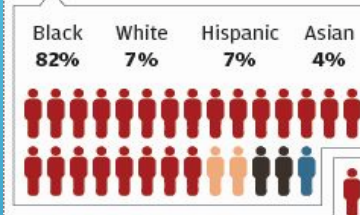
State Journal

7 Homicides 2018, 5 Homicides 2019

Arrests for crimes with a gun involved

Blacks made up only about 7 percent of Madison's population in 2017 but accounted for the vast majority of arrests for crimes involving a gun by both juveniles and adults last year.

JUVENILE ARRESTS: 28



ADULT ARRESTS: 158

SOURCE: Madison Police Department

State Journal

- ▶ Our Mission:
 - ▶ We are focused on being front line interrupters of violence, racial disparities, mass incarceration, and injustices primarily in impoverished communities.
- ▶ Our Vision:
 - ▶ FIC will serve as the bridge builder with grassroots leaders, communities of faith, businesses, government agencies, and the broader community to implement violence prevention strategies.

WHAT IS THE ROLE OF FIC



FOCUSED INTERRUPTION COALITION

- ▶ We have Certified Peer Specialists, Certified Recovery Coaches, Certified Reentry Coaches
 - ▶ Lived experience
 - ▶ Trauma-informed care
 - ▶ Strength focused
 - ▶ Recovery-oriented
 - ▶ Formal training



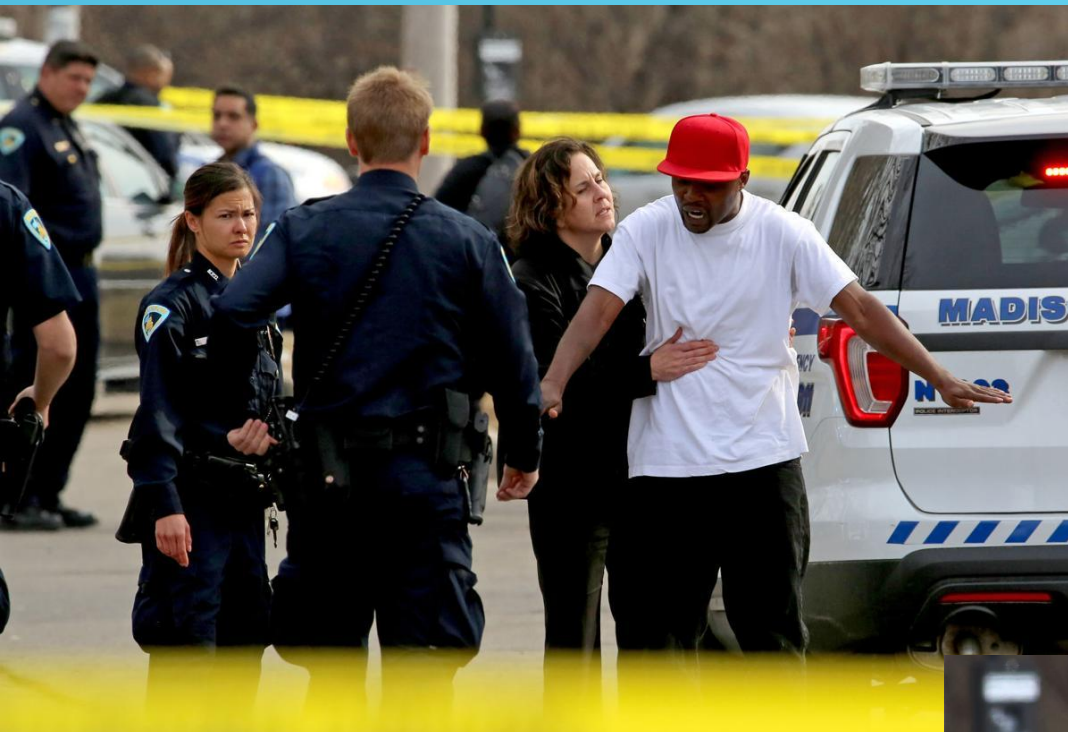
FOCUSED INTERRUPTION COALITION

- ▶ Our Partners:
 - ▶ Public Health Madison & Dane County
 - ▶ Madison Police Department
 - ▶ UW Hospital and Clinics/UW Health
 - ▶ Nehemiah Center for Urban Leadership
 - ▶ Thomas and Associates
 - ▶ Urban League of Greater Madison
 - ▶ CSIT (and all of the partners of CSIT)
- 

FOCUSED INTERRUPTION COALITION

- ▶ Our Work in 2019:
 - ▶ 2019 Responses (01/01/19 – 09/30/19):
 - ▶ FIC provided crisis response to **26** total incidents
 - ▶ Homicides: 2
 - ▶ Shootings: 21, 4 stabbings, 1 poisoning
 - ▶ De-escalation: 16
 - ▶ Perpetrators: 114 individuals
 - ▶ Program Participants: 146 individuals






WHAT IS TRAUMA ON TOP OF TRAUMA?

- ▶ A non-clinical point of view
- ▶ Generational hurts and trauma
- ▶ A tale of two cities
 - ▶ Madison ranked most livable mid-size city in the U.S. – Wisconsin State Journal
 - ▶ Race to Equity report by Wisconsin Council for Children and Families
 - ▶ High school drop out for young African American males is at an all time high in this community – over 40%.
 - ▶ The academic disparity between African American and White 4th and 8th graders is the greatest in the county.
 - ▶ 50% of young African American males (18-24) are caught up in the criminal justice snare (incarcerated, on probation or parole). 50 percent!
 - ▶ Our state incarcerates more African American males than any other state in the U.S..
 - ▶ The unemployment rate for African Americans is 5 times higher than for whites.

HOW FIC WORKS WITH THE TRAUMA RESPONDERS & THOSE TRAUMATIZED

- ▶ Our Work:
 - ▶ Crisis response at UW Hospital to connect with victims and family members to mitigate the effects of trauma
 - ▶ De-escalation
 - ▶ Crisis Response Peer Support Program
 - ▶ Participation is voluntary
 - ▶ Intake is done 24-48 hours after crisis
- 

CRISIS RESPONSE PEER SUPPORT PROGRAM OVERVIEW



Partner 1

Provides Crisis Response Peer Support Services

Treatment Plan Development

Case Management for 50 Individuals

Emergency Response

24-Hour Crisis Hotline Management

Thomas & Associates

Partner 2

Provides Mental Health & Substance Abuse Direct Services

Priority Mental Health Services

Priority Substance Abuse Services

Peer Support Services

Culturally Responsive Services



Partner 3

Provides Supported Employment Services

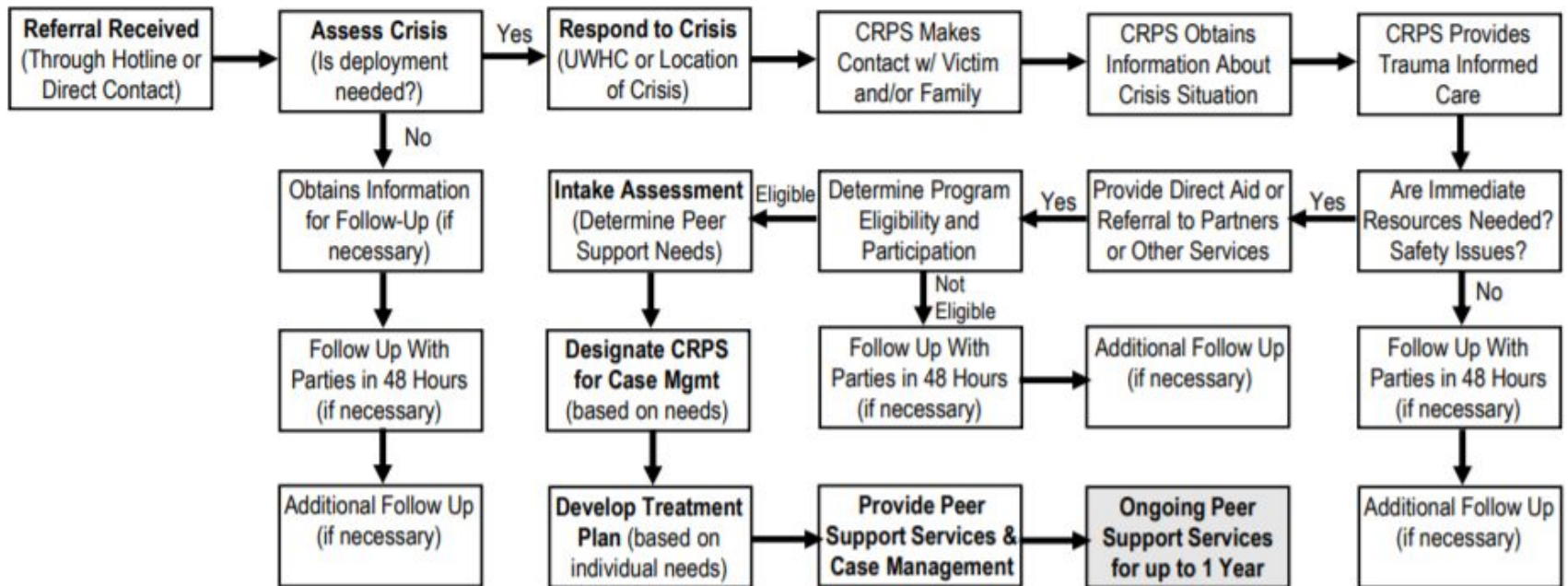
Priority Employment Training

Priority Job Search Services

Priority Employment Programs

Priority Supported Services

Program Overview



OPPORTUNITIES TO SERVE THE COMMUNITY

► Familiarize yourself with challenges:

1. https://madison.com/ct/opinion/column/dr-dipesh-navsaria-gun-violence-is-in-my-lane-and/article_fb046c3f-38b1-5745-9655-0355777f5bf8.html
2. https://madison.com/ct/opinion/mailbag/dr-melissa-stiles-preventing-gun-violence-is-in-everybody-s/article_c3f58ba7-834e-5cbb-acf9-e84b9116d3a0.html

3.

https://madison.com/wsj/news/local/govt-and-politics/randy-molina-leads-new-initiative-on-violence-prevention/article_ed457dfc-fa37-52e0-8c00-12b7494223fd.html

4.

https://madison.com/wsj/gun-violence-in-madison-cycles-of-trauma-part-one/collection_75c97d38-8c37-5773-a43e-4eab1e078b5d.html

5.

https://madison.com/wsj/gun-violence-in-madison-cycles-of-trauma-part-two/collection_0d8ff46f-ee8e-54f8-a10b-eccafc82c0d5.html

6.

https://madison.com/wsj/gun-violence-in-madison-cycles-of-trauma-part-three/collection_a9650410-94b7-587d-b450-2fd6fb758aa3.html

7.

https://madison.com/wsj/gun-violence-in-madison-cycles-of-trauma-part-four/collection_1e3a9142-a02b-5233-9e58-644085bdc6ef.html

8.

https://madison.com/wsj/gun-violence-in-madison-cycles-of-trauma-part-five/collection_aac14a34-e1fc-5812-a4ec-119e99b64b68.html

▶ Black History for a New Day Course

a. 9 Weeks yearly from January thru March

<https://nehemiah.org/justified-anger/us-history-application/>

▶ Volunteer

a. <https://nehemiah.org/get-involved/volunteer-opportunities/>

b. <https://www.bgcfdc.org/get-involved/volunteer>

c. <https://www.bbbsmadison.org/volunteer/>